

Research & Reviews: Journal of Microbiology and Biotechnology

Studies on the Production of (E,E)-geranylinalool in *E. coli*

Shuai Wang^{1#}, Hongwei Liu^{1#}, Yanfang Yang¹, Wei Fan¹, Iain W. Wilson², Qiang Wang^{3*} and Deyou Qiu^{1*}

¹State Key Laboratory of Tree Genetics and Breeding, The Research Institute of Forestry, Chinese Academy of Forestry, Beijing, PR China

²CSIRO Agriculture Flagship, Canberra ACT, Australia

³College of Agronomy, Sichuan Agricultural University, Chengdu, PR China

#These authors contributed equally to this work.

Research Article

Received date: 08/07/2015

Accepted date: 07/09/2015

Published date: 10/09/2015

*Corresponding authors: Qiang Wang, College of Agronomy, Sichuan Agricultural University, Chengdu, PR China, Tel: 028-86290170.

E-mail: qwang@sicau.edu.cn

Deyou Qiu, The Research Institute of Forestry, CAF, Beijing, PR China, Tel: 010-62889641

E-mail: qiudy@caf.ac.cn

Keywords: (E,E)-Geranylinaloolsynthase, *E. coli* expression, Metabolic engineering, GC-MS.

ABSTRACT

(E,E)-geranylinalool (GL) can be used as an intermediate for chemical synthesis of several drugs as well as an insect pheromone and spice. Traditionally, (E)-nerolidol was used as a substrate to make (E,E)-geranylinalool but the yield was low due to the multiple and complicated chemical synthesis processes. In this study, the (E,E)-geranylinalool synthase gene (*AtGES*, *At1g61120*) from *Arabidopsis thaliana* was inserted into the *Escherichia coli* vector pET30a(+). *E. coli* strains containing plasmids pIRS and pGG that enable the synthesis of (E,E)-geranylinalool precursors, when co-transformed with *AtGES*, were able to synthesize (E,E)-geranylinalool with a yield up to 31.42 mg/L. This is the first report about the production of (E,E)-geranylinalool by manipulation of multiple genes of its biosynthesis pathway in *E. coli*. Our results may facilitate metabolic engineering towards more cost-effective production of (E,E)-geranylinalool in microorganisms.

INTRODUCTION

Geranylinalool (GL) is a linear diterpene with special fragrance, and widely used in decorative cosmetics and detergents^[1]. In various plant species, including *Arabidopsis thaliana*, geranylinalool is reported as a possible insect pheromone attracting herbivore predators^[2]. Geranylinalool is also used pharmacy as an intermediate of several drugs such as teprenone.

(E)-nerolidol is usually used as a precursor for chemical synthesis of (E,E)-geranylinalool through eight steps of reactions, including protecting functional groups, oxidizing reaction, and halogenating reaction, etc. However, these complicated processes limit the yield of (E,E)-geranylinalool synthesized chemically^[3]. There is a possibility to produce (E,E)-geranylinalool through the metabolic engineering approach, using specially engineered microorganisms. Only a few (E,E)-geranylinalool synthase (*GES*) genes including *AtGES*^[4] in *A. thaliana*, *MtTPS3*^[5] in *Medicago truncatula*, and *PITPS2*^[6] in *Phaseolus lunata* have been cloned and characterized. In plants, (E,E)-geranylinalool is formed from (E,E,E)-geranylgeranyl diphosphate (GGPP) by *GES*, while geranylgeranyl diphosphate synthase (GGPPS) catalyzes isopentenyl diphosphate (IPP) and dimethylallyl diphosphate (DMAPP) precursors to form GGPP^[7]. IPP and DMAPP can be interconverted by isopentenyl diphosphate isomerase (IDI) to balance their usage in the production of long chain isoprenoid precursors^[8]. The methyl erythritol phosphate (MEP) pathway in prokaryotic bacteria and plant plastid can lead to IPP^[9], the yield of which is controlled by two rate-limiting enzymes, 1-deoxy-D-xylulose-5-phosphatesynthase (*DXS*) and 1-deoxy-D-xylulose-5-phosphate reductase (*DXR*)^[10]. The truncated *E.coli* gene *idi*, *dxr* and *dxs* were inserted into pCDFDuet vector to construct the recombinant plasmid pIRS and successfully improved the yield of IPP and DMAPP^[11]. Furthermore, GGPPS also was expressed in *E.coli* to provide the GGPP precursor for diterpene production in metabolic engineering, in which one plasmid, pGG, containing the truncated *Abies grandis* GGPPS gene, was successfully constructed^[12].

Analysis of fused protein: *AtGES* was expressed in *E.coli* through transformation of pET30a-*AtGES* into *E. coli* BL21 (DE3) and *E. coli* C41 (DE3), and the empty vector of pET30a(+) was used as negative control. SDS-PAGE analysis showed that *AtGES* successfully expressed in *E. coli* as recombinant protein with about 104 kD molecular weight (MW), which is in accord with predicted MW (**Figure 2**).

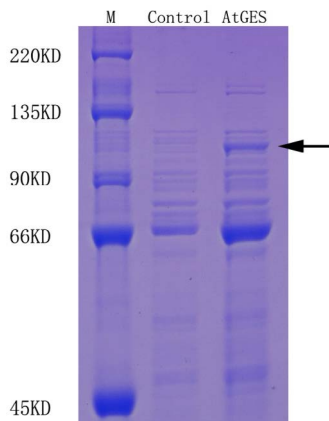


Figure 2. PAGE analysis of the *AtGES* recombinant protein. The black arrows highlights the recombinant protein of *AtGES*.

GC-MS Analysis: To characterize the (*E,E*)-geranylinalool production, pET30a-*AtGES*, pIRS and pGG were co-transformed into *E. coli*. The organic extract of engineering strain culture was analyzed by GC-MS, which showed that *AtGES* reacted with GGPP to make (*E,E*)-geranylinalool through comparison with retention time and mass spectra of the authentic standard. As indicated in **Figure 3**, there was no (*E,E*)-geranylinalool production in the control strain that was not transformed with *AtGES*, and clear (*E,E*)-geranylinalool peak was detected in *AtGES* expression culture with same retention time (17.623 min.) and mass spectra as that of authentic (*E,E*)-geranylinalool (**Figure 4**).

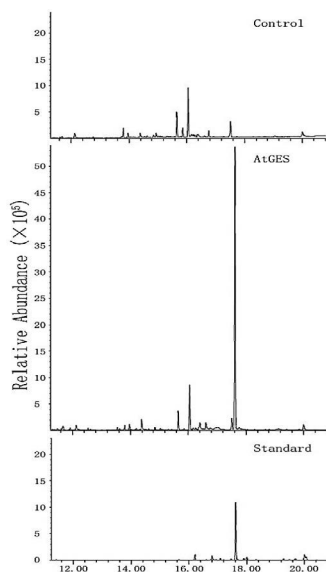


Figure 3. GC-MS analysis of the control, the fermentation product of *AtGES* in *E.coli* and the (*E,E*)-geranylinalool standard.

The quantification of (*E,E*)-geranylinalool produced through metabolic engineering approach: To carry out the quantitative analysis of (*E,E*)-geranylinalool production, the external standard curve was made through injection of a series of (*E,E*)-geranylinalool standard with different concentration. The equation of standard curve was $Y=8.636 \times X+5.804$, and the R^2 was 0.997, suggesting good reliability for quantification. Using this standard curve and equation, the yield of (*E,E*)-geranylinalool in *E. coli* BL21 (DE3) engineering was measured to be 3.74 mg/L. Further yield improvement was performed using *E. coli* C41 (DE3) strain, which was reported to have higher protein expression level^[13]. Remarkably, about 8 fold yield increase was detected in the C41 engineering strain with a yield of 31.42 mg/L of (*E,E*)-geranylinalool obtained.

CONCLUSION

(*E,E*)-geranylinalool is a pharmaceutical intermediate, insect pheromone and a spice, and usually synthesized from (*E*)-nerolidol through complicated chemical reactions, which limit the yield. Metabolic engineering approach was widely used to synthesize various compounds, but requires significant characterization of the biosynthetic genes required to synthesize the

required product. *AtGES* was characterized to catalyze (*E,E*)-geranylinalool formation from GGPP and could be utilized through metabolic engineering approach to make (*E,E*)-geranylinalool.

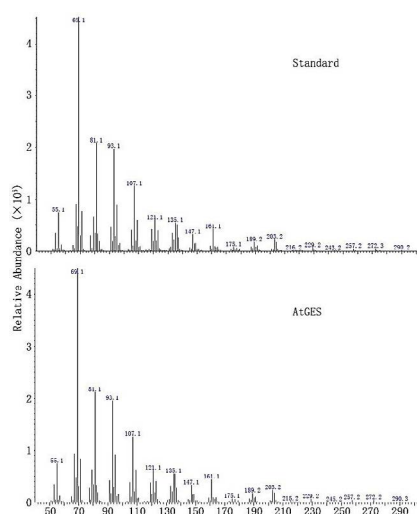


Figure 4. Mass spectrum of the (*E,E*)-geranylinalool standard and the fermentation product (*E,E*)-geranylinalool of *AtGES* in *E.coli*.

In this study, we made the recombinant expression construct of *AtGES* and successfully expressed it in *E. coli* strain. Co-expression pET30a-*ATGES* with pIRS and pGG harboring upstream gene to provide precursor of (*E,E*)-geranylinalool resulted in a good yield of (*E,E*)-geranylinalool in the *E. coli* BL21 engineering strain (3.74 mg/L). Optimization using *E. coli* C41 strain, increased the yield to 31.42 mg/L, which indicated the potential for further improvement of yield, such as incorporation of mevalonate (MVA) pathway and precursor feeding. With further optimization, our expression system may provide sufficient yields for commercial synthesis of (*E,E*)-geranylinalool in a bioreactor in the near future.

ACKNOWLEDGMENTS

This work was supported by the Basic Research Fund of RIF (RIF2014-01).

REFERENCES

1. Chen W and Viljoen AM. Geraniol- a review of a commercially important fragrance material. *S Afr J Bot.* 2010; 76: 643-651.
2. Lemaire M, et al. Geranylinalool (Diterpene Alcohol). *J Chem Ecol.* 1990; 16: 2067-2079.
3. Zeng QL. The chemical synthesis method of (*E,E*)-geranylinalool. 2007; China Patent 101070270A.
4. Herde M, et al. Identification and regulation of TPS04/GES, an Arabidopsis geranylinalool synthase catalyzing the first step in the formation of the insect-induced volatile C16-homoterpene TMTT. *Plant Cell.* 2008; 20: 1152-1168.
5. Arimura GI, et al. Herbivore-induced terpenoid emission in *Medicago truncatula*: concerted action of jasmonate, ethylene and calcium signaling. *Planta.* 2008; 227: 453-464.
6. Brillada C, et al. Metabolic engineering of the C16 homoterpene TMTT in *Lotus japonicus* through overexpression of (*E,E*)-geranylinalool synthase attracts generalist and specialist predators in different manners. *New Phytol.* 2013; 200: 1200-1211.
7. McGarvey D J and Croteau R. Terpenoid metabolism. *Plant Cell.* 1995; 7: 1015.
8. Thulasiram HV. A common mechanism for branching, cyclopropanation, and cyclobutanation reactions in the isoprenoid biosynthetic pathway. *J Am Chem Soc.* 2008; 130: 1966-1971.
9. Rohmer M. From molecular fossils of bacterial hopanoids to the formation of isoprene units: discovery and elucidation of the methylerythritol phosphate pathway. *Lipids.* 2008; 43: 1095-1107.
10. Lichtenthaler HK. The 1-deoxy-D-xylulose-5-phosphate pathway of isoprenoid biosynthesis in plants. *Annu Rev Plant Biol.* 1999; 50: 47-65.
11. Morrone D, et al. Increasing diterpene yield with a modular metabolic engineering system in *E. coli*: comparison of MEV and MEP isoprenoid precursor pathway engineering. *Appl Microbial Biot* 2010; 85: 1893-1906.
12. Cyr A, et al. A modular approach for facile biosynthesis of labdane-related diterpenes. *J Am Chem Soc.* 2007; 129: 6684-6685.
13. Cheng D, et al. High-level expression of recombinant rabbit cytochrome P450 2E1 in *Escherichia coli* C41 and its purification. *Protein Expres Purif.* 2004; 33: 66-71.