



# **Power Quality Improvement in VSI Fed Induction Motor Drive by Using Active Power Filter**

**M.Srinivasan<sup>1</sup>, Dr.S.U.Prabha<sup>2</sup>, M.Tamilvani<sup>3</sup>, K.Nithya<sup>4</sup>**

Asst. Prof. (Sr.G), Dept.of EEE, Bannari Amman Institute of Technology, Sathyamangalam, Tamilnadu, India<sup>1</sup>

Prof. and Head, Dept.of EEE, Bannari Amman Institute of Technology, Sathyamangalam, Tamilnadu, India<sup>2</sup>

PG Scholar, Dept.of EEE, Bannari Amman Institute of Technology, Sathyamangalam, Tamilnadu, India<sup>3&4</sup>

**ABSTRACT:** A control strategy of an Active Power Filter (APF) is introduced for harmonic mitigation in Variable Frequency Drives (VFD). In this paper Voltage Source Inverter (VSI) is used to supply a variable frequency variable voltage to a three phase induction motor drive in a variable speed application. One important complication is that, Voltage Source Inverter (VSI) used in VFD causes non-sinusoidal output voltage and current due to presence of harmonics. Shunt active filter with VSI topology is proposed for current harmonic elimination. The current control scheme proposed for SAPF is Synchronous Reference Frame theory applied to SVPWM. The reference current can be calculated by using Reference Frame Transformation, reference current are transformed from a–b–c stationary frame to d–q rotating frame. In SVPWM technique, the Active Power Filter reference voltage is generated and desired Active Power Filter output voltage is generated by SVPWM. The analysis of simulation results are carried out in MATLAB/SIMULINK model.

**Keywords:** Voltage Source Inverter, Pulse Width Modulation, Active power filter, Synchronous Reference Frame Transformation, Space Vector Modulation.

## **I.INTRODUCTION**

In Variable Speed application, Voltage Source Inverter is commonly used to supply a variable frequency variable voltage to a three phase induction motor. In this PWM drives are more efficient and typically provide higher levels of performance. A suitable Pulse Width Modulation technique is employed to obtain the required output voltage of the inverter. The most common AC drives today are based on sinusoidal pulse-width modulation SPWM. . Induction motor is rugged, reliable, and single-fed machine; it can directly absorb the reactive power from the utility With this device, we can get two advantages: one is that we can get a low start current; the other is that we can change the motor speed conveniently by controlling the output frequency of the ASD.

Two basic types of inverters are exist in general. Current source inverter (CSI), employing a dc link inductance across the inverter and this provides a switched current waveform at the motor output terminals. CSI are robust in operation and reliable due to the insensitivity to short circuits and noisy environment. Voltage Source Inverter (VSI), employing a dc link capacitor and providing a switched voltage waveform and they are commonly used when compared to Current Source Inverter since the use of Pulse Width Modulation (PWM) in them allows efficient and smooth operation, which is free from torque pulsations and cogging. Furthermore, the frequency range of VSI is higher and they are usually more in expensive when compared to CSI drives of the same rating. Both Voltage Source Inverters and Current Source Inverters are used in adjustable speed AC drives. However, Voltage Source Inverters with constant Volts/Hertz (V/f) are more popular, where the need of high accuracy of speed control is not crucial and for the applications without position control requirements.

# International Journal of Advanced Research in Electrical, Electronics and Instrumentation Engineering

(An ISO 3297: 2007 Certified Organization)

Vol. 2, Issue 12, December 2013

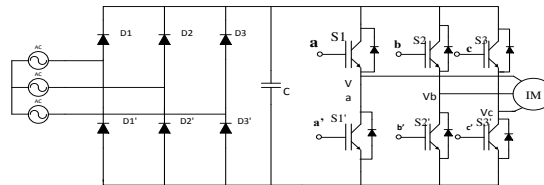


Fig. 1 Conventional induction motor drive

Sinusoidal Pulse Width Modulation technique is applied to Voltage Source Inverter, In sinusoidal PWM instead of maintaining the width of all pulses the same as in the case of multiple PWM, the width of each is varied in proportion to the amplitude of a sine wave evaluated at the same pulse. The distortion is reduced significantly compared to multiple PWM. A high-frequency triangular carrier wave  $V_c$  is compared with a sinusoidal reference  $V_r$  of the desired frequency. The intersection of  $V_c$  and  $V_r$  waves determines the switching instants and commutation of the modulated pulse which is shown in Fig. 2. The modulation index controls the harmonic content of the output waveform.

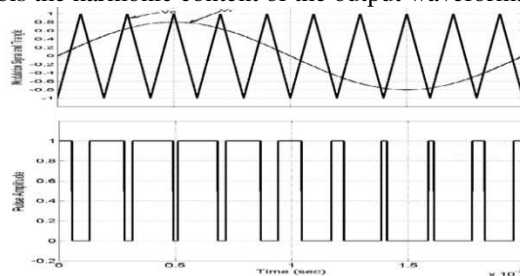


Fig. 2 Sinusoidal Pulse Width Modulation Waveform

But at the same time, AC inverter can also causes harmonics in this drive and this harmonics will reduce the power factor and the motor performance gets affected in this system. The harmonic effects in induction motor are noise vibration, shaft deflection, overheating, excessive losses, harmonic torques, oscillation, low efficiency and shorten induction motor life operation.

Because of these problems, the harmonic filters have to be design by considering all of those factors. There can be different types of filters that are used in order to reduce the harmonic distortion. In which active harmonic filters are electronic devices that eliminate the undesirable harmonics on the network by inserting negative harmonics into the network. The Active Power Filters are normally available for low voltage networks

## II. ACTIVE POWER FILTER

Active Power Filter offers flexible and versatile solution for mitigation of harmonic current and voltage to improve the voltage quality problems. They are connect to low and medium voltage distribution system in shunt or in series. Series Active Power Filter is connected to the system through a coupling transformer. The compensation voltage is used to cancel the voltage harmonics of the load. Source. The main aim of an shunt Active Power Filter (APF) is to generate compensating currents into inverter output for cancelling the current harmonics contained in the induction motor load current. This will thus result in sinusoidal. The Active Power Filters consist of active components such as IGBT-transistors and gate pulse are generated by using Synchronous Reference Frame theory applied to space vector pulse width modulation.



# International Journal of Advanced Research in Electrical, Electronics and Instrumentation Engineering

(An ISO 3297: 2007 Certified Organization)

Vol. 2, Issue 12, December 2013

## III. SYNCHRONOUS REFERENCE FRAME THEORY

In this Synchronous Reference Frame theory based d-q model is discussed. Reference frame transformation refers to transformation from a-b-c to d-q-0 axes. Coordinates from a three-phase a-b-c stationary coordinate system to the d-q-0 rotating coordinate system is carried out. Here first transformation is from a-b-c to alpha-beta coordinates and second transformation is from alpha-beta to d-q-0 co-ordinates. Two different transformation matrix need to be required Clarke Transformation and park transformation.

### A. Clarke Transformation

The forward Clarke (1943) transform does a magnitude invariant translation from a three phase system into two orthogonal components. If the neutral - ground connection is neglected, the sum of variables in a three-phase system (a-b-c) is equal to zero, and there is redundant information. Therefore, the system can be reduced to two variables, called  $\alpha$  and  $\beta$ . The Clarke transform is given by:

$$\begin{bmatrix} V_\alpha \\ V_\beta \end{bmatrix} = \frac{2}{3} \begin{bmatrix} 1 & \frac{1}{2} & -\frac{1}{2} \\ 0 & \frac{\sqrt{3}}{2} & -\frac{\sqrt{3}}{2} \end{bmatrix} \begin{bmatrix} V_a \\ V_b \\ V_c \end{bmatrix} \quad (1)$$

Reference frame theory based d-q model is presented. Instantaneous voltages in the a-b-c coordinates are transformed to two axis coordinates represented by  $\alpha$  and  $\beta$  shown in Fig. 3.

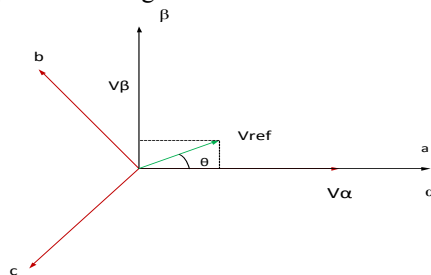


Fig. 3 Vector Diagram for a-b-c to  $\alpha - \beta$  axis

### B. Park Transformation

The Park (1929) transform is a vector rotation, which rotates a vector (defined by its quadrature components) through a specified angle. The Park transformation is given by following set of equation:

$$\begin{bmatrix} V_d \\ V_q \end{bmatrix} = \begin{bmatrix} \cos \theta & -\sin \theta \\ -\sin \theta & \cos \theta \end{bmatrix} \begin{bmatrix} V_\alpha \\ V_\beta \end{bmatrix} \quad (2)$$

In three phases balanced system neutral current is zero, and zero sequence current does not exist. Voltage in  $\alpha$  and  $\beta$  reference frame is express as shown in equation (2). The Voltage in  $\alpha$  and  $\beta$  reference frame is further transform in rotating reference frame with  $\omega_r$  as angular velocity in d-q reference frame. . Instantaneous voltages in the  $\alpha - \beta$  coordinates are transformed to d-q coordinates shown in Fig. 4.

# International Journal of Advanced Research in Electrical, Electronics and Instrumentation Engineering

(An ISO 3297: 2007 Certified Organization)

Vol. 2, Issue 12, December 2013

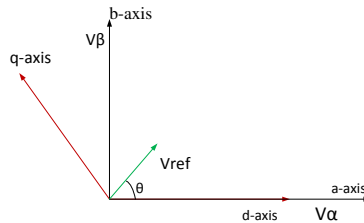


Fig. 4 Vector Diagram for  $\alpha - \beta$  axis to d-q axis

### C. Proportional Integral Controller

The PI controller is very important part for the SAPF. It consists of proportional term and integral term. With this element, the best control performance of the SAPF is obtained. PI focuses on the difference (error) between the Process Variable (PV) and the Set-Point (SP), the difference between harmonics current reference signal  $I_H$  and the filter current  $I_f$ . PI controller algorithm involves two separate parameters; the Proportional and the Integral.

The Proportional value determines the reaction to the current error; the Integral determines the reaction based on the sum of recent errors. Average sum of these two actions is used to adjust the process of the plant. By correctly "tuning" these two constants in the PI controller algorithm, the PI controller can provide control action designed for specific process requirements.

### D. Closed Loop Current Control Scheme Using Synchronous Frame Theory

The control scheme shown in Fig. 5 consists of inner current control loop and outer voltage control loop. The PI controller of the voltage control loop gives a current command required to maintain the DC bus voltage to set value. This is added to the AC component of d axis of the load current. It gives the current reference value for d axis component. The reference for q axis is obtained after the orientation of load current.

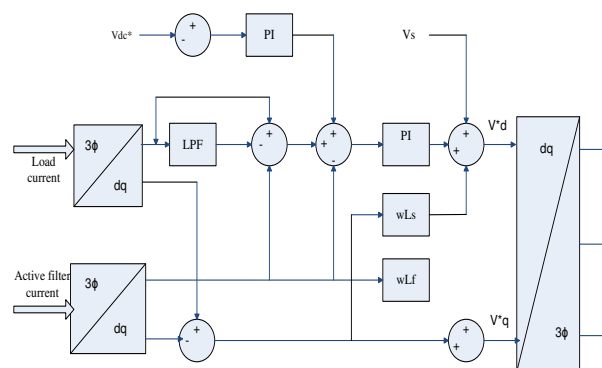


Fig. 5 Block Diagram of Closed Loop Current Control Scheme Using SRF

## IV. SVPWM

SVPWM signals can be generated directly from the instantaneous reference phase voltages. Each reference phase voltage is compared with the triangular carrier, and the pole voltages for individual phase are generated independently of each other. To obtain the maximum possible peak amplitude of the fundamental phase voltage in linear modulation, a common mode voltage  $V_{offset}$  is added to the reference phase voltages, where the magnitude of  $V_{offset}$  is given by,

# International Journal of Advanced Research in Electrical, Electronics and Instrumentation Engineering

(An ISO 3297: 2007 Certified Organization)

Vol. 2, Issue 12, December 2013

$$V_{offset} = - \frac{(V_{max} + V_{min})}{2} \quad (3)$$

Where  $V_{max}$  the maximum magnitude of the three is sampled reference phase voltages and  $V_{min}$  is the minimum magnitude of the three sampled reference phase voltages.

## V. SIMULATION RESULTS

### A. Variable Frequency Drive Without Active Power Filter

This section represents the simulation result of Variable Frequency Drive before connecting Active Power Filter by using MATLAB/SIMULINK.

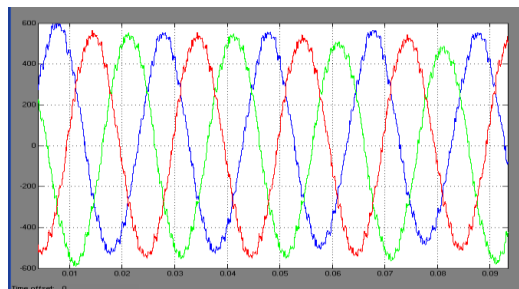


Fig. 6 Output Current Waveform of VSI Fed Induction Motor.

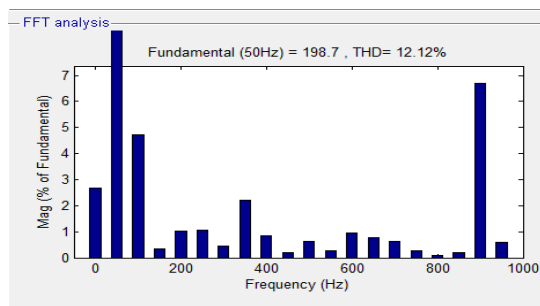


Fig. 7 THD Level For VFD Without Filter.

Fig. 6 and Fig. 7 Shows output current waveform and FFT analysis of VFD without connecting active filter. This represents the presence of output current harmonics in load side.

### B. Synchronous Reference Frame Transformation

The 3 $\phi$  sine waves with 120 degree phase shift are converted to 2 $\phi$   $\alpha$ - $\beta$  and then converter to d-q axis .The transformation circuit is developed in the MATLAB/SIMULINK

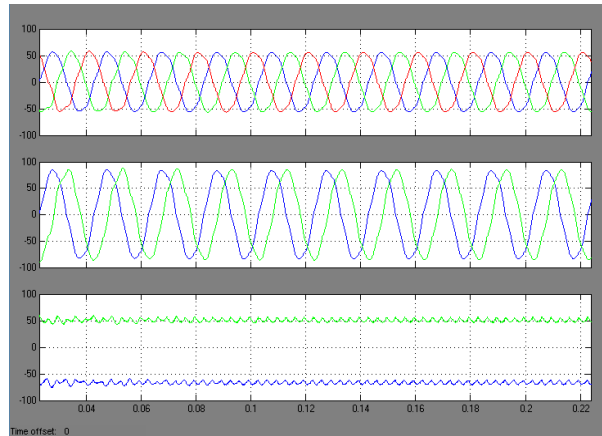


Fig. 8 Output Waveform of Reference Frame Transformation.

Fig. 8 shows the  $V_a, V_b, V_c$  sine wave with 120 degree phase shift is converted to  $2\phi$  wave form ( $\alpha\beta$ ) that is 90 degree phase shift each other when  $\alpha$  is 0 degree and  $\beta$  is 90 degree. Again  $\alpha-\beta$  is transformed to d-q axis.

### C. SVPWM Pulse Generation.

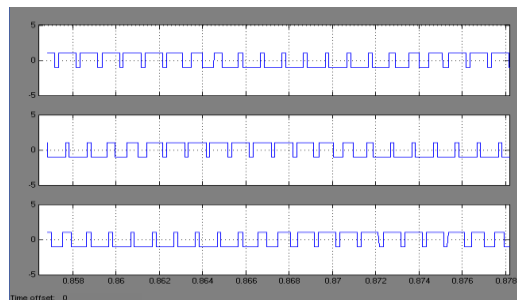


Fig. 9 SVPWM Pulse generation for VSI.

Fig. 9 shows the gate pulse for VSI inverter. Three phase reference voltage is compared with the triangular carrier wave to produce gate pulse to VSI used in Shunt Active Power Filter.

### D. Variable Frequency Drive With Active Power Filter

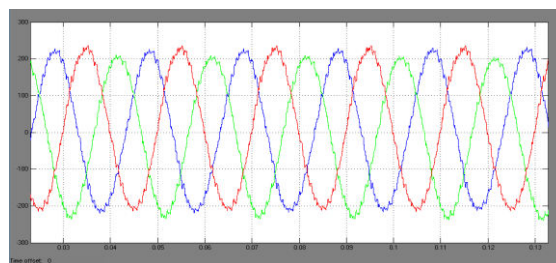


Fig. 10 Output current waveform of VFD with filter.

# International Journal of Advanced Research in Electrical, Electronics and Instrumentation Engineering

(An ISO 3297: 2007 Certified Organization)

Vol. 2, Issue 12, December 2013

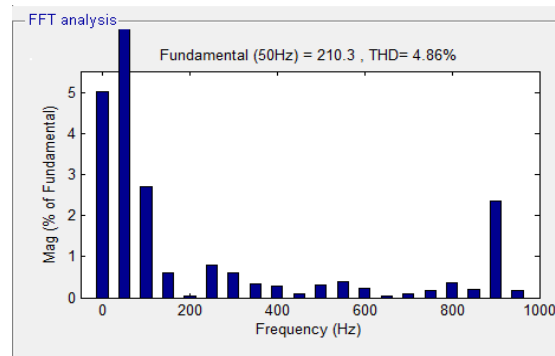


Fig. 11 THD Level For VFD With Filter.

Fig. 10 and Fig. 11 Shows output current waveform and FFT analysis of VFD with connecting active filter. In this Shunt Active Power Filter (SAPF) is connected to load side in order to reduce the output current harmonics. The current control scheme proposed for Shunt Active Power Filter (SAPF) is Synchronous Reference Frame theory and SVPWM technique is employed to generate pulse to SAPF by using MATLAB/SIMULINK..

## VI. CONCLUSION

In this paper Shunt Active Power Filter is developed for harmonic reduction in VSI based Induction motor drive. Here Synchronous Reference Frame theory with SVPWM technique is used for controlling the injection of the compensating current. From the simulation results it is observed that Total Harmonic Distortion (THD) is reduced from 12.12% to 4.86% using the proposed methodology in efficient manner.

## REFERENCES

- [1]. Jarupula Somlal, Venu Gopala, Rao Mannam, "Analysis Of Discrete & Space Vector PWM Controlled Hybrid Active Power Filters For Power Quality Enhancement," International Journal of Advances in Engineering & Technology, Vol. 2, Issue 1, pp. 331-341, Jan 2012.
- [2]. M.Sunitha, B. N . Kartheek, "Elimination of Harmonics Using Active Power Filter Based on DQ Reference Frame Theory," International Journal of Engineering Trends And Technology, Vol. 4, Issue 4, pp. 781, April 2013.
- [3]. Sangshin Kwak, Hamid A. Toliyat, "A Hybrid Converter System for High-performance Large Induction Motor Drives," IEEE Trans. Energy. Con., vol. 20, no. 3, pp. 504, Sep 2005.
- [4]. A. R. Beig and V. T. Ranganathan, "A Novel CSI fed Induction Motor Drive," IEEE Trans. Power Electron., vol. 21, no. 4, pp. 1073-1082, Jul. 2006.
- [5]. J. R. Espinoza and G. Joos, "A Current Source Inverter fed Induction Motor Drive System with Reduced Losses," IEEE Trans. Ind. Appl., vol. 34, no. 4, pp. 796-805, Jul/Aug. 1998.
- [6]. Chandani. M. Chovatia, Narayan P Gupta, Preeti N Gupta, "Harmonic Mitigation using Shunt Active at Utility end in grid connected to Renewable Source of Energy" International Journal of Emerging Technology and Advanced Engineering, Vol. 2, Issue 8, August 2012.
- [7]. M. H. Bierhoff and F. W. Fuchs, "DC Link Harmonics of Three Phase Voltage Source Converters Influenced by the Pulse Width Modulation Strategy-An Analysis," IEEE Trans. Ind. Electron., vol. 55, no. 5, pp. 2085-2092, May 2008.
- [8]. G. Narayanan, D. Zhao, H. K. Krishnamurthy, R. Ayyanar, and V. T. Ranganathan, "Space Vector Based Hybrid PWM Techniques for Reduced Current Ripple," IEEE Trans. Ind. Electron., vol. 55, no. 4, pp. 1614-1627, Apr. 2008.
- [9]. Sangu Ravindra, V.C.Veera Reddy, S.Sivanagaraju, "Design of Shunt Active Power Filter to eliminate the harmonic currents and to compensate the reactive power under distorted and or imbalanced source voltages in steady state," International Journal of Engineering Trends And Technology, Vol. 2, Issue 3, pp. 20, April 2011.
- [10]. G.K Nisha, IAENG, S.Ushakumari and Z.V Lakaparampil, "Harmonic Elimination of Space Vector Modulated Three Phase Inverter," Proceedings of the International Multi conference of Engineer and Computer Scientists, vol. 2, IMECS 2012, March 14-16, 2012.



# International Journal of Advanced Research in Electrical, Electronics and Instrumentation Engineering

(An ISO 3297: 2007 Certified Organization)

Vol. 2, Issue 12, December 2013

## BIOGRAPHY



**M.Srinivasan** is presently working as Asst. professor in Bannari Amman Institute of technology, received his BE (Electrical and Electronics Engineering) degree from CIT, Coimbatore. He received his ME (Power Electronics and Drives) degree from Bannari Amman Institute of technology, Sathyamangalam. He is currently pursuing his Phd degree in the field of Power quality and energy conservation. His teaching experience is 8 years and his area of interest is Energy conservation and management.



**Dr.S.U. Prabha** is presently working as professor & Head of the Department in Electrical and Electronics Engineering of Bannari Amman Institute of Technology, Sathyamangalam, Erode District, Tamil Nadu. she has completed her Ph.D at Multimedia University, Malaysia in 2010 and she possess more than fifteen years of teaching and research experience. She has published in many international journals and international conferences. She is also a reviewer in many international journals. She is presently guiding PG and Ph.D scholars.



**M.Tamilvani** received her B.E degree in Electrical & Electronics Engineering from Velammal College of Engineering and Technology, Madurai affiliated to Anna University Chennai in the year 2012. Currently she is pursuing her master degree in Power Electronics and Drives in Bannari Amman Institute of Technology affiliated to Anna University, Chennai. Her field of interest includes power quality and Electrical Machines.



**K.Nithya** received her B.E degree in Electrical & Electronics Engineering from Vidhyaa Vikkas college of Engineering and Technology, Namakkal affiliated to Anna University Chennai in the year 2012. Currently she is pursuing her master degree in Power Electronics and Drives in Bannari Amman Institute of Technology affiliated to Anna University Chennai. Her field of interest includes Power quality and Power Electronics.