

**International Journal of Innovative Research in Science,  
Engineering and Technology**

*(An ISO 3297: 2007 Certified Organization)*

**Vol. 2, Issue 11, November 2013**

# **NETWORK ANALYSIS FOR URBAN UTILITY SERVICES USING GEOINFORMATIC TECHNIQUE: A STUDY OF SOLAPUR CITY (MAHARASHTRA), INDIA**

**Adinath D. Gade<sup>1</sup>, Sagar P. Mali<sup>2</sup>, Yogesh A. Mane<sup>3</sup>**

Assistant Professor, D.R. Mane Mahavidyalaya, Kagal, MS, INDIA<sup>1</sup>

Project Fellow, UGC Major Research Project, Dept of Geography, Shivaji University, Kolhapur, INDIA<sup>2</sup>

Research Assistant, Maharashtra Space Application Centre, Nagpur, MS, INDIA<sup>3</sup>

**Abstract:** Economic development is happening due to rapid rate of industrialization and urbanization in India. The growth and development of the urban area largely depend on proper urban planning and provision of urban utility services for urban wellbeing. Good quality road network, electricity, water supply, proper urban land use and sanitation planning are major urban service and School, Banks, Hospital, Fire and Police station, Market and Entertainment are major utility service which indication of the quality of city. Technology plays vital role in urban utility services, urban monitoring, planning and decision making. The aim of this present study is to find out various utility services with respect to road network and find the optimal path and service area of urban resources in Solapur city. Google earth data and Survey of India (SOI) toposheets were used for base map. GPS survey carried out for collected the various utility services within city. In analysis, satellite image used for study the land use / land cover pattern of the city, network analysis used for find out the optimal path for rapidly accessible utilities and service area demarcated for the identification of zones of the specific utility service. Analysis resulted that, there is lack of major utility services in the city periphery and need to more services establish in city periphery. Geoinformatic techniques has powerful source for real time data and helpful in utility planning and monitoring urban environment.

**Key Words:** GPS, Service Area, Optimal Path

## **I. INTRODUCTION**

In 2001, about 286 million persons were living in urban areas of India and it was the second largest urban population in the world. The 74th Constitution Amendment Act (CAA) came into force in June, 1993 which sought to improve strengthen urban governance and management of services. The traditional role of Municipal Corporation had been one of providing basic Utilities of civilian for their happy social life. Service includes water supply, sanitation, roads, street-lights, health service and maintenance of public places. In addition, they performed certain regulatory functions relating construction of buildings, public areas and commercial places for public wellbeing like Banks, ATM centers, Fire stations, Ambulance, School and Colleges, Hospitals and Blood banks, Police station and shopping malls, Entertainment locations establishments in a proper place in city. In addition, as each element plays its own role in the formation of urban structure, every city possesses a unique structure with its own momentum, presenting entities that are occasionally regarded as too diverse for a single topical study. Nevertheless, "geography is not about the precise analysis of particular service areas. it is more concerned with the ways in which these relationships are reflected in the functional and physical structure of the town" (Dickinson, 1959).

## **II. STUDY AREA**

Solapur is situated on the south-eastern border of Maharashtra State adjoining Karnataka. The city is located on the East side of Maharashtra between 170 40" N Latitude and 750 54" E Longitude. The city covers an area of 180.33 sq km.

**International Journal of Innovative Research in Science,  
Engineering and Technology**

(An ISO 3297: 2007 Certified Organization)

Vol. 2, Issue 11, November 2013

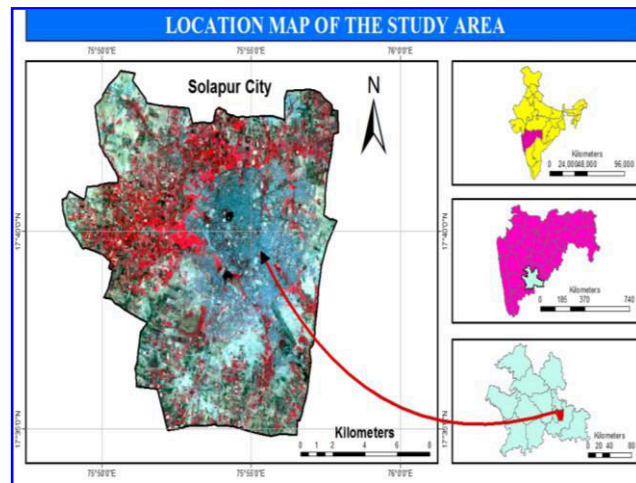


Figure 1: Location Map of Solapur City

**III. DATA & METHODOLOGY**

- Spatial Data**

**Table 1: Spatial Data Used**

Sr. No.	Used Data	Spatial Reference	Data Source
1.	Toposheet 47 o/14	1:50,000	Survey of India
2.	Cadastral Map	1:10,000	Solapur Municipal Corporation

- Non-Spatial Data**

**Table 2: Non-Spatial Data Used**

Sr. No.	Data Used	Data source
1	Prabhag Name of city	Solapur Municipal Corporation
2	Attribute Data: Service Area	www.indiacom.com

In the present research methodology, both spatial and non-spatial data integrated in GIS environment. First road network map prepared on Google Earth and GPS survey carried out for collection of utility services in the city. Both Google map and GPS survey data convert into shape file using Global Mapper 12 software and bring these file into ArcGIS 9.3 desktop application. Final analysis carried out using Network Analysis tool in ArcGIS 9.3 and calculate Optimal path and service area of various utility services in the city with respect to time and speed of vehicle. Figure 3. highlight the general research methodology.

# International Journal of Innovative Research in Science, Engineering and Technology

(An ISO 3297: 2007 Certified Organization)

Vol. 2, Issue 11, November 2013

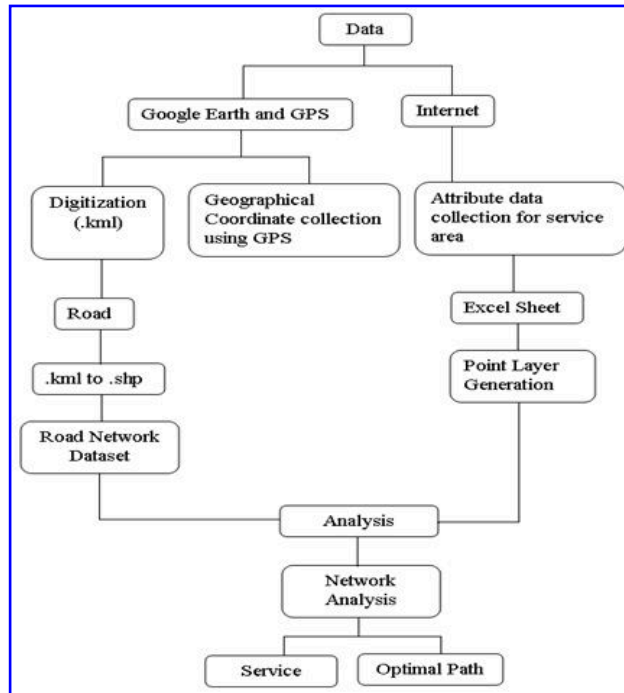


Figure 2: Research Methodology Chart

## IV. RESULT AND DISCUSSION

### 1. Optimal Path for Hospital Services:

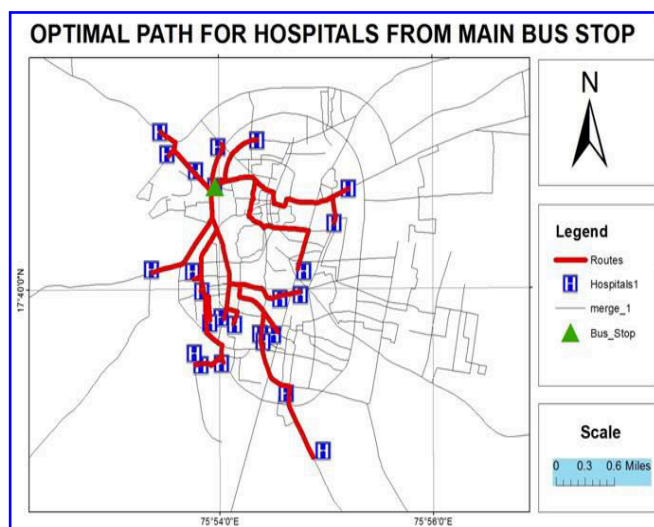


Figure 3: Optimal path for Hospital Service

With the use of remote sensing & GIS technology we can calculate accurate distance & time from incident to facility. Here calculate distance (meter) & time (minute) from incident( Bus Stop) to facility(Hospital). Here we consider the average speed of vehicle have 30Km./hr . In Solapur city Shivaji Chowk Bus Stop is main Bus Stop from Copyright to IJIRSET [www.ijirset.com](http://www.ijirset.com)

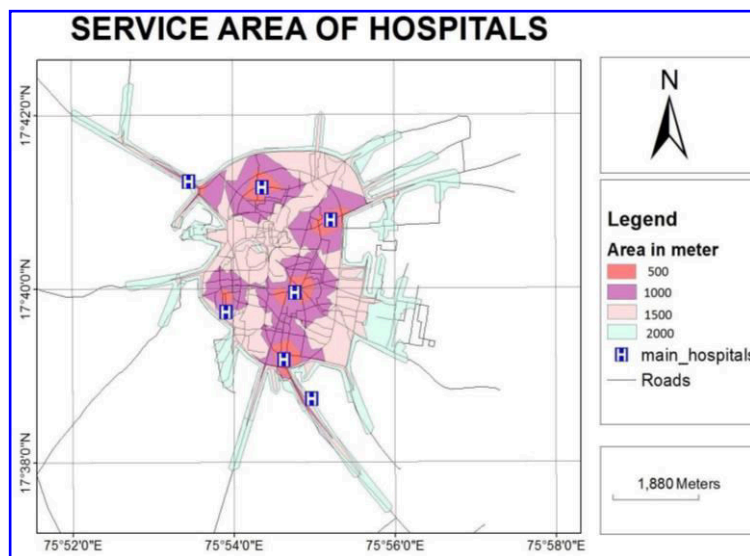
# International Journal of Innovative Research in Science, Engineering and Technology

(An ISO 3297: 2007 Certified Organization)

Vol. 2, Issue 11, November 2013

this incident Dr. Chidgupkar Hospital is very nearest. The distance between this two place is 747.401694 meter & 1.494803 minute time necessary for cover this distance. Then, Sidheshwar Cancer Hospital is far way from facility (Hospital) The distance between this two place is 4778.255535meter & 9.556511minute time necessary for cover this distance. Table No: 3 calculate the distance (meter) & time (minute) from incident( Bus Stop) to facility(Hospital) in Solapur city.

## 2. Service for Hospitals:



**Figure 4: Service Area of Hospital**

Here calculate the service area of hospitals with using remote sensing & GIS technology. Service area divided in to four categories (0-500, 500-1000, 1000-2000 & 2000-3000 meter ) & calculate total area & time distance.

**Table 3: Service area of Hospital**

Sr.	Name	Area_meter <sup>2</sup>	Time_Minute	Area_sq_m
1	Wadi Hospital : 2000 - 3000	373	74.57077	5386
2	Gundeti Hospital : 2000 - 3000	561	112.1677	7059
3	Sidheshwar Cancer Hospital : 2000 - 3000	365	72.99748	4110
4	Ambika Hospital : 2000 - 3000	437	87.38024	3958
5	Suyog Hospital : 2000 - 3000	479	95.88727	5130
6	Civil Hospital : 2000 - 3000	545	108.9169	6056

# International Journal of Innovative Research in Science, Engineering and Technology

(An ISO 3297: 2007 Certified Organization)

Vol. 2, Issue 11, November 2013

7	Kasturi Nursing Home : 2000 - 3000	387	77.4179	4689
8	Ambika Hospital : 1000 - 2000	19608	39.21596	1628
9	Sidheshwar Cancer Hospital : 1000 - 2000	17382	34.76469	1289
10	Gundeti Hospital : 1000 - 2000	24888	49.77553	3875
11	Wadi Hospital : 1000 - 2000	14562	29.1233	2398
12	Civil Hospital : 1000 - 2000	26224	52.44861	5644

Nearly, 18995 sq km. area cover in 0-500 meter service area zone , 5658 sq km. area cover in 0-500 meter service area zone . 4140 sq m. area cover in 500-1000 meter service area zone & 57426 sq km. area cover in 1000-2000 meter service area zone.

### 3. Optimal path for Fire Brigade:

Here draw optimal path from fire brigade to main chowk . The distance between Saraswati chowk Bus Stop to first fire brigade is very optimal or short compare to other that is 445.296254 meter distance & want 0.890593 minute time for cover this distance. The distance between Ashok Nagar Bus Stop is mutch away from second fire brigade compare to other that is 2060.44582 meter distance & want 4.120892 minute time for cover this distance.

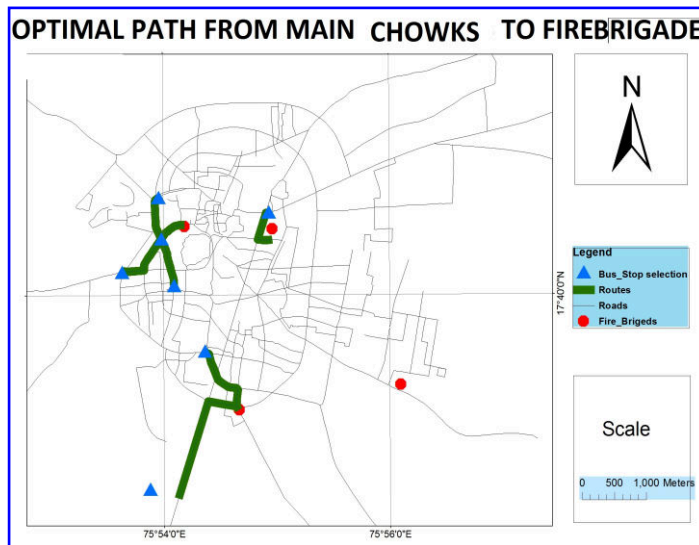


Figure 5: Optimal Path of Fire Brigade

# International Journal of Innovative Research in Science, Engineering and Technology

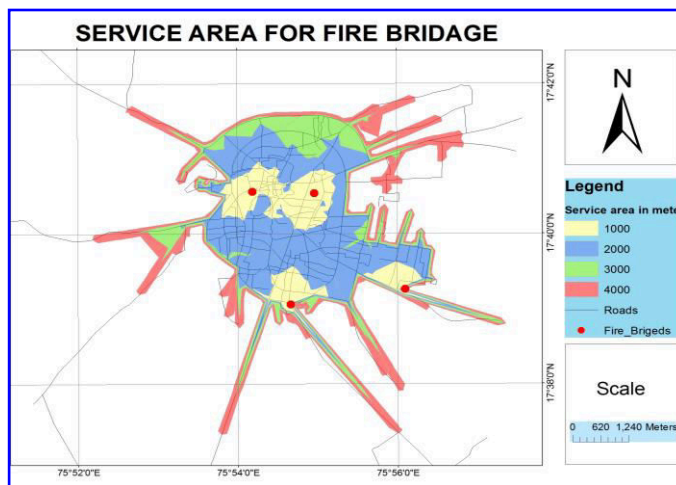
(An ISO 3297: 2007 Certified Organization)

Vol. 2, Issue 11, November 2013

**Table 4: Time and Distance of Fire Brigade**

Sr. No.	Name of main chouk & Fire briged	Total_meter	Total_minute
1	Ashok Nagar Bus Stop - second	2060.44582	4.120892
2	Bhaiya Chowk Bus Stop - first	1352.816612	2.705633
3	Duffrin Chowk Bus Stop - first	1189.38347	2.378767
4	Kannya chowk Bus Stop - therd	702.69343	1.405387
5	Saraswati chowk Bus Stop - first	445.296254	0.890593
6	Sat Rasta Bus Stop - second	1160.270538	2.320541
7	Shivaji Chowk Bus Stop - first	1137.941792	2.275884

#### 4. Service Area for Fire Brigade:



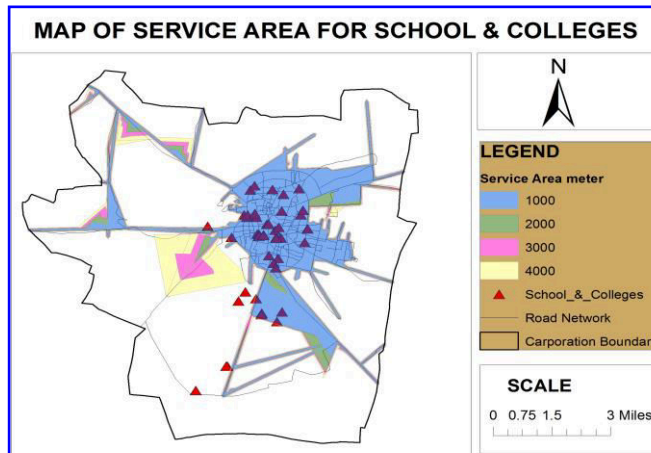
**Figure 6: Service Area of Fire Brigade**

In Solapur four area found. Here we calculate the service area of fire brigade with breakage 1000, 2000, 3000 & 4000 meter. As well as calculate the time in meter for cover this particular area. **Table 4** show the zone wise service area & time. For 1000 meter area travelling wants two minute time. In Solapur city want 12 to 14 minute's time for provide fire brigade service to outer side of city. Then 6 to 8 minute's time want for middle area of city.

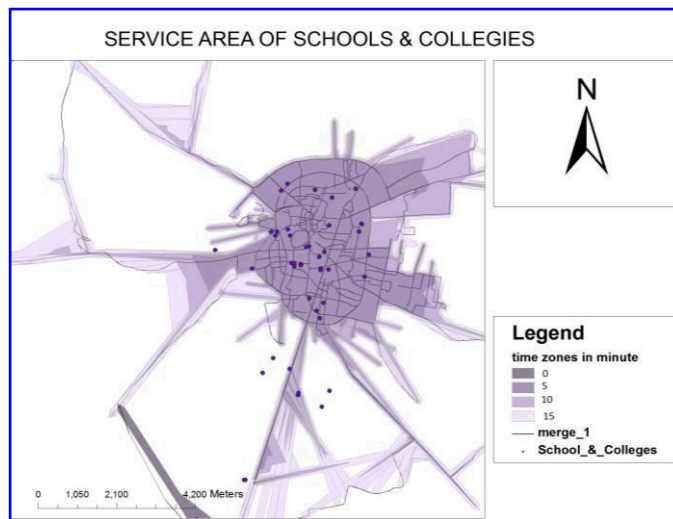
**International Journal of Innovative Research in Science,  
Engineering and Technology**

(An ISO 3297: 2007 Certified Organization)

Vol. 2, Issue 11, November 2013



**Figure 8: Service Area of School & Colleges (Distance)**



**Figure 9: Service Area of School & Colleges (Time)**

Nearly 942 sq. km. area cover under 0-5 minute time service area zone of school & colleges, 3452 sq. km. area cover under 5-10 minute time service area zone, then 6795 sq. km. area cover under 10-15 minute time service area zone.

**V. CONCLUSION & DISCUSSION**

In Solapur city several emergency services like blood banks, hospitals and fire brigades etc. mainly found in the very few in number and concentrated at city core area which took more time for providing emergency services.

Dr. Chidgupkar Hospital is very nearest from CBD. The distance between this two place is 747.401694 meter & 1.494803 minute time necessary for cover this distance. Then, Sidheshwar Cancer Hospital is far way from facility (Hospital) The distance between this two place is 4778.255535meter & 9.556511minute time necessary for cover this distance. Most hospitals lie within 1000-2000 meter i.e. 57426 sq m.

In the service area of School & colleges very much area cover within 0-1000 meter service zone ie 775 km<sup>2</sup> area cover. In time analysis of service area nearly 942 sq. km. area cover under 0-5 minute time service area zone of

# International Journal of Innovative Research in Science, Engineering and Technology

(An ISO 3297: 2007 Certified Organization)

Vol. 2, Issue 11, November 2013

school & colleges, 3452 sq. km. area cover under 5-10 minute time service area zone, then 6795 sq. km. area cover under 10-15 minute time service area zone. . In Solapur city want 12 to 14 minute's time for provide fire brigade service to outer side of city. Then 6 to 8 minute's time want for middle area of city.

In Suggestion, there is needed more emergency services such as hospitals, fire stations and blood banks at the peripheral region of the Solapur city for providing better accessibility in very short time. The other utility services like schools and colleges and mainly concentrated in city core area which need to decentralize towards the city outskirts or can be established such a new services towards city periphery for reduce the imbalance in utility services in the Solapur city.

## REFERENCES

- [1] A.S. Ansari, "Urban Renewal and Development. Rawat publications, Jaipur & New Delhi-2000
- [2] C.C. Yadav, "Land Use in Big Cities: A study of Delhi. Inter India publication, New Delhi, 1979.
- [3] F.B. Zhan, "Three Fastest Shortest Path Algorithms on Real Road Networks: Data Structures and Procedures Journal of Geographic Information and Decision Analysis, vol.1, No.1, pp. 70-82, 1997.
- [4] K.M. Kulkarni, "Geography of Crowding and Human response", Concept publishing co., New Delhi, 1984.
- [5] K.N.Gopi and M. Kalpana, " Environment and Human Wellbeing-An Urban perspective", Concept Publishing House, New Delhi, 1992.
- [6] R. Nisanci, "GIS Based Fire Analysis and Production of Fire-risk Maps: The Trabzon Experience", Scientific Research and Essays Vol. 5(9), pp. 970-977, 2010
- [7] R.S.Sharma, "Urban decay in India", Munshiram Manoharlal Publishers Pvt. Ltd, Delhi-,1987
- [8] Sagar Mali, S.S. Panlahkar, C.Pawar and S. Das, "Generation of 3D City model for Urban Utility information System Using Digital Photogrammetry and GIS Technology", Global Journal of Research in Engineering, Vol. 12 (3), pp. 26-30, 2012
- [9] Sagar Mali, S. Bhailume and S.Das, "Geoinformatics Application for Urban Utilities and Information System: A Case Study of Pune City, Maharashtra, India", International Journal of Computer Applications, Vol. 65 (2), pp. 33-39, 2013
- [10] Sagar Mali, Y. Mane, "Network Analysis for Urban Emergency Services in Solapur City, India: A Geoinformatic Approach", International Journal of Advanced Computer Technology", Vol.2(5), 2013
- [11] S. El houssaini and A. Badri, "Development of a GIS-Based Monitoring System for Road Network, Journal of Computing, Volume 4, Issue, pp. 90-94, 2012.
- [12] S. Bhaskaran & Bisun Datt, Applications of Hyperspectral Remote Sensing in Urban Regions. ACRS 2000 (GIS Development Website) School of Geography, 2000
- [13] Y. Naci, J. Karsten, "Automatic DEM Generation, Problems and Restriction in Urban Areas", Department of Geodesy and Photogrammetry, Istanbul, Turkey, 2003

## BIOGRAPHY



**Mr. Adinath D. Gade:** Assistant Professor, D.R.Mane Mahavidyalaya, Kagal, **Qualification:** M.A.(Geography), SET, B.Ed. **Specialization :** Physical Geography, Agriculture Geography, Urban geography.



**International Journal of Innovative Research in Science,  
Engineering and Technology**

*(An ISO 3297: 2007 Certified Organization)*

**Vol. 2, Issue 11, November 2013**



**Mr. Sagar P. Mali:** Project Fellow, UGC Major Research Project, Department of Geography, Shivaji University, Kolhapur, MS, INDIA.

**Qualification:** M.A. (Geography), M.Sc. (Geoinformatics), M.B.A. (Geoinformatics), M.Phil (Geography), Ph.D. Appearing (Geography).

**Research Specialization:** Watershed Management, Physical Geography, Agriculture Geography, Urban Geography, GIS, GPS and Remote Sensing Technology



**Mr. Yogesh A. Mane:** Research Assistant, Maharashtra Space Application Centre, Nagpur, MS, INDIA **Qualification:** M.A. (Geography), M.Sc. (Geoinformatics) **Research Specialization:** Urban Geography, Agriculture Geography, GIS, GPS and Remote Sensing Technology.